

Mailing Address:	508 Queen St. West Toronto, Ontario M5V 2B3
Main Number:	647-351-9001
General Manager:	Steven Biasutti, steven@thevelvet.ca
Website:	www.thevelvet.ca
Internet:	Wireless throughout
Capacity:	Current: 355 Standing Proposed: 440 Standing March 2016)
F/B:	Fully licensed throughout
Ticketing:	Sold through the Venue's contract with Ticketweb.
Box Office:	Inside Main Doors
Accessibility:	There are no steps at entrance. Accessible seating is available ***washrooms are downstairs - not accessible
Rental Rates/Info:	Please send event dates, questions, comments to: steven@thevelvet.ca
Terms :	Intermission: Mandatory or Penalty Merchandise Rate: 20% House 80% artist on soft goods 50% deposit on Signing Venue License Agreement Damage Deposit required \$5,000,000 of Public Liability Insurance Advertising available through Venue Social Media, Marquee
2nd Floor:	
Artist Greenroom: 17' 4" x 17' x 10"	1 Shower. 1 Private Washroom. Washer/Dryer. Kitchenette Work Station. Lounge Area with Couches.
Tour Manager Office: 5' 7" x 13' 5"	Work Station. 2 Chairs. Full Length Mirror. Rooftop Patio

Load In Area:

Straight 5 Ton Trucks can use Laneway off Ryerson Ave.
for quick drop off/pick up
Bus with Trailers load in/out on Ryerson Ave.
*No parking south side of Queen St. 7am-10am, 3pm to 7pm
*No parking north side of Queen St. 7am-10am, 3pm to 7pm
*All load in and out is under strict supervision of The Velvet
Music Hall and begins at 1pm on Rental day unless otherwise
arranged.
*There is no on-site parking; Street parking and private lot
parking are responsibility of Promoter

Stage Specs

Wood Vaneer
Stage Depth = 18'
Width = 18.5'
Cieling Height = 8.5' from Stage
Stage Height = 21" from Floor

Audio Specs:**Power:**

60 amp service, 3 phase

Main PA System:

Console - 1 x SC48 AVID Console (Mains and Monitors)
4 x L'Accoustics Arcs Speakers Flown
4 x PRG SB 218c Subwoofers
1 x Amp Rack Lab Gruppen /Crown ESA stamped
1 x BSS FDS 366 signal processor
1 x CD playback
6 x RMS Wedges /Power /processing
3 x Electro-Voice ZLX 15p fill/delay speakers
1 x Rapco 32 ch snake with 8 returns to stage
4 x monitor mixes folded back from FOH. All mixes are Bi Amped,
processing and amplification for stage monitoring is at FOH.
1 x Shure Beta 91a
1 x Shure Beta 52
4 x Sennhieser e904
2 x Shure SM849
1 x Shure SM 94
6 x Shure SM 57
6 x Shure SM 58
4 x Rapco TD 100 Direct Box
2 x Rapco DB 100 Direct Box
2 x Countryman Type 85 Active Direct Box
2 x K&M tall boom stands
6 x K&M short boom stands

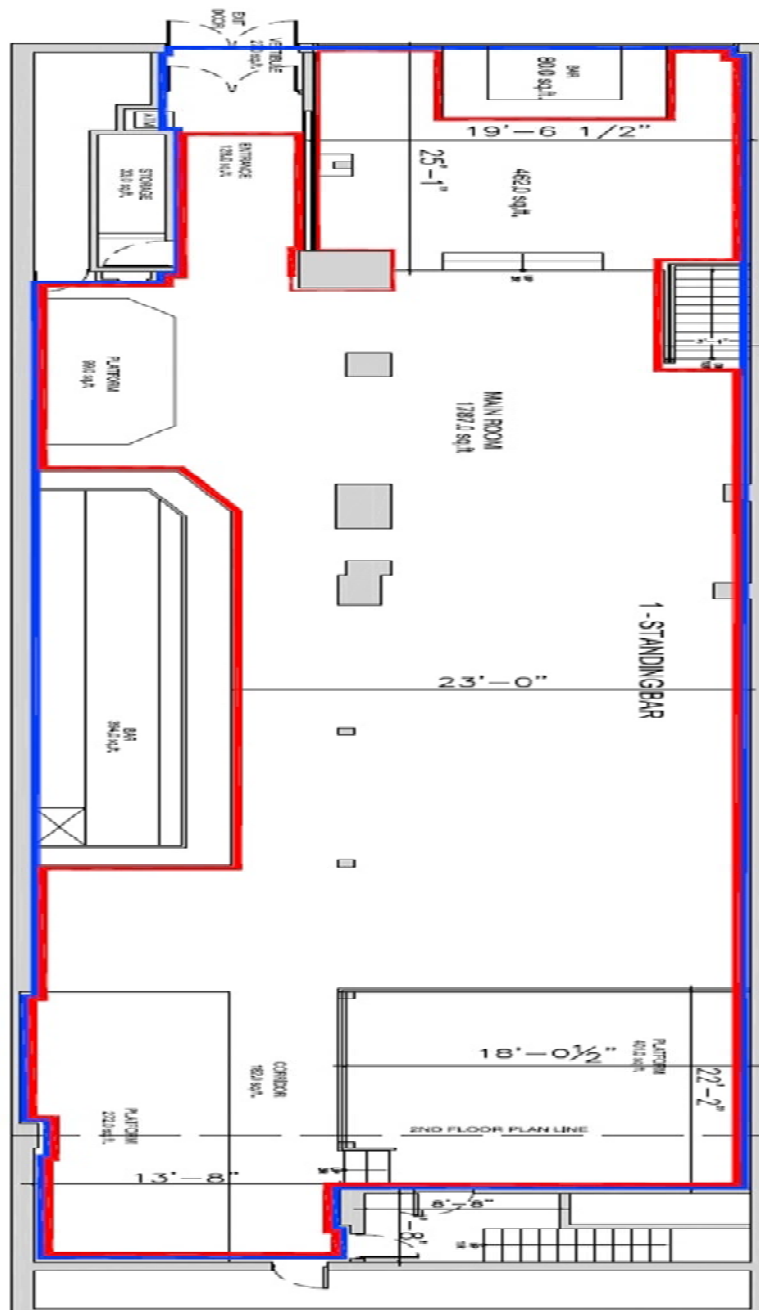
2 x Atlas Round Base stands
2 x Radial Stage Flea sub snakes
35 x Various XLR mic cables

***** No Side Fills In House**

Lx Specs: As Per Page**Power:**

60 amp service, 3 phase
Cam Lock Available
Voltage = 120/208
Cycles = 60

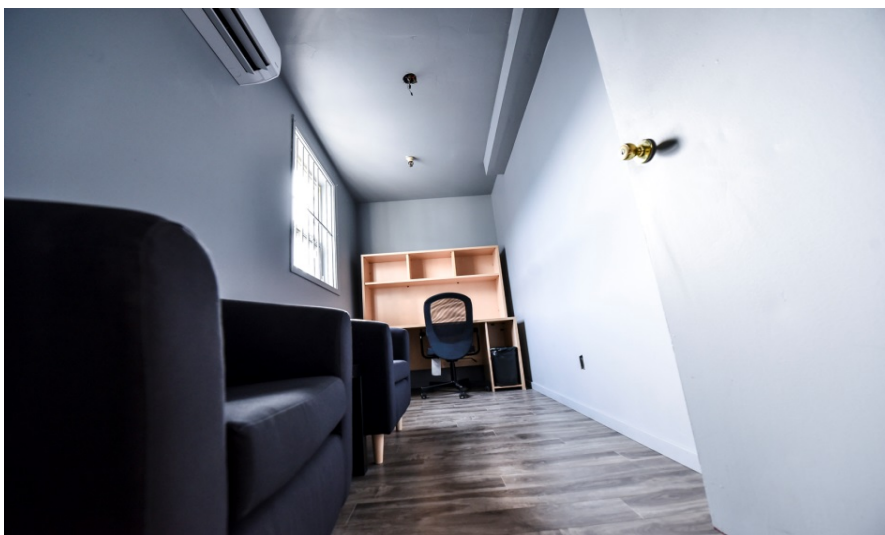
Floor Plan





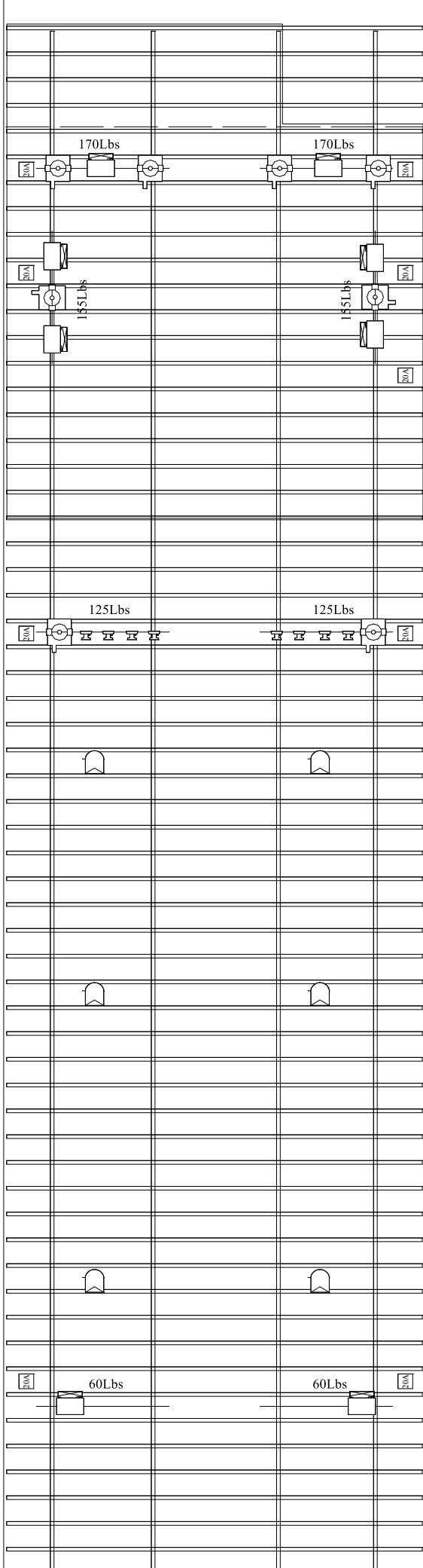


Artists' Green Room



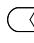
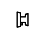


TOTAL WEIGHT = 1020LBS

20A TWL CIRCUIT



FIXTURE LEGEND

Symbol	Name	Count
	Mac 250 ENTOUR	8
	Palco 3 Mobile	8
	Microh LEDP64	6
	LUMI AMBER WHITE	8

NOTES

- ALL WEIGHTS ARE APPROXIMATE TO MANUFACTOR SPECS
- WEIGHT INCLUDES CABLE AND RIGGING HARDWARE
- PIPES TO BE RIGGED WITH 3' GAKFLEX, 5/8 SHACKLE AND 1/2 CHEESEGBOROUGH WITH FORGED EYE