

Mailing Address:	508 Queen St. West Toronto, Ontario M5V 2B3
Main Number:	647-351-9001
General Manager:	Alex Vincenzi: alex@thevelvet.ca
Website:	www.thevelvet.ca
Internet:	Wireless throughout
Capacity:	Current: 355 Standing
F/B:	Fully licensed throughout
Ticketing:	Sold through the Venue's contract with Ticketweb.
Box Office:	Inside Main Doors
Accessibility:	There are no steps at entrance. Accessible seating is available ***washrooms are downstairs - not accessible
Rental Rates/Info:	Please send event dates, questions, comments to: info@thevelvet.ca
Terms :	Intermission: Mandatory or Penalty Merchandise Rate: 20% House 80% artist on soft goods 50% deposit on Signing Venue License Agreement Damage Deposit required \$5,000,000 of Public Liability Insurance Advertising available through Venue Social Media, Marquee
2nd Floor:	
Artist Greenroom: 17' 4" x 17' x 10"	1 Private Shower. 1 Private Washroom. Washer/Dryer. Kitchenette Work Station. Lounge Area with Couches. Iron & Ironing Board
Tour Manager Office: 5' 7" x 13' 5"	Work Station. 2 Chairs. Full Length Mirror. Rooftop Patio

Load In Area:

Straight 5 Ton Trucks can use Laneway off Ryerson Ave.
for quick drop off/pick up
Bus with Trailers load in/out on Ryerson Ave.
*No parking south side of Queen St. 7am-10am, 3pm to 7pm
*No parking north side of Queen St. 7am-10am, 3pm to 7pm
*All load in and out is under strict supervision of The Velvet
Music Hall and begins at 1pm on Rental day unless otherwise
arranged.
*There is no on-site parking; Street parking and private lot
parking are responsibility of Promoter

Stage Specs

Wood Vaneer
Stage Depth = 18'
Width = 18.5'
Ceiling Height = 8.5' from Stage
Stage Height = 21" from Floor

Audio Specs**Power:**

60 amp service, 3 phase

Main PA System:

Console - 1 x SC48 AVID Console (Mains and Monitors)
4 x L'Acoustics Arcs Speakers Flown
2 x 215 Adamson Drum Bins
4 x PRG SB 218c Subwoofers
1 x Amp Rack Lab Gruppen /Crown ESA stamped
1 x BSS FDS 366 signal processor
1 x CD playback
5 x JSI J-17 Wedges
3 x Electro-Voice ZLX 15p fill/delay speakers
1 x 48 ch 1-way split snake with 8 returns to stage
4 x monitor mixes folded back from FOH. All mixes are Bi Amped,
processing and amplification for stage monitoring is at FOH.
1 x Shure Beta 91a
1 x Shure Beta 52
4 x Sennhieser e904
2 x Shure SM849
1 x Shure SM 94
6 x Shure SM 57
6 x Shure SM 58
4 x Rapco TD 100 Direct Box
2 x Rapco DB 100 Direct Box
2 x Countryman Type 85 Active Direct Box
2 x K&M tall boom stands
6 x K&M short boom stands

2 x Atlas Round Base sta
2 x Radial Stage Flea sub

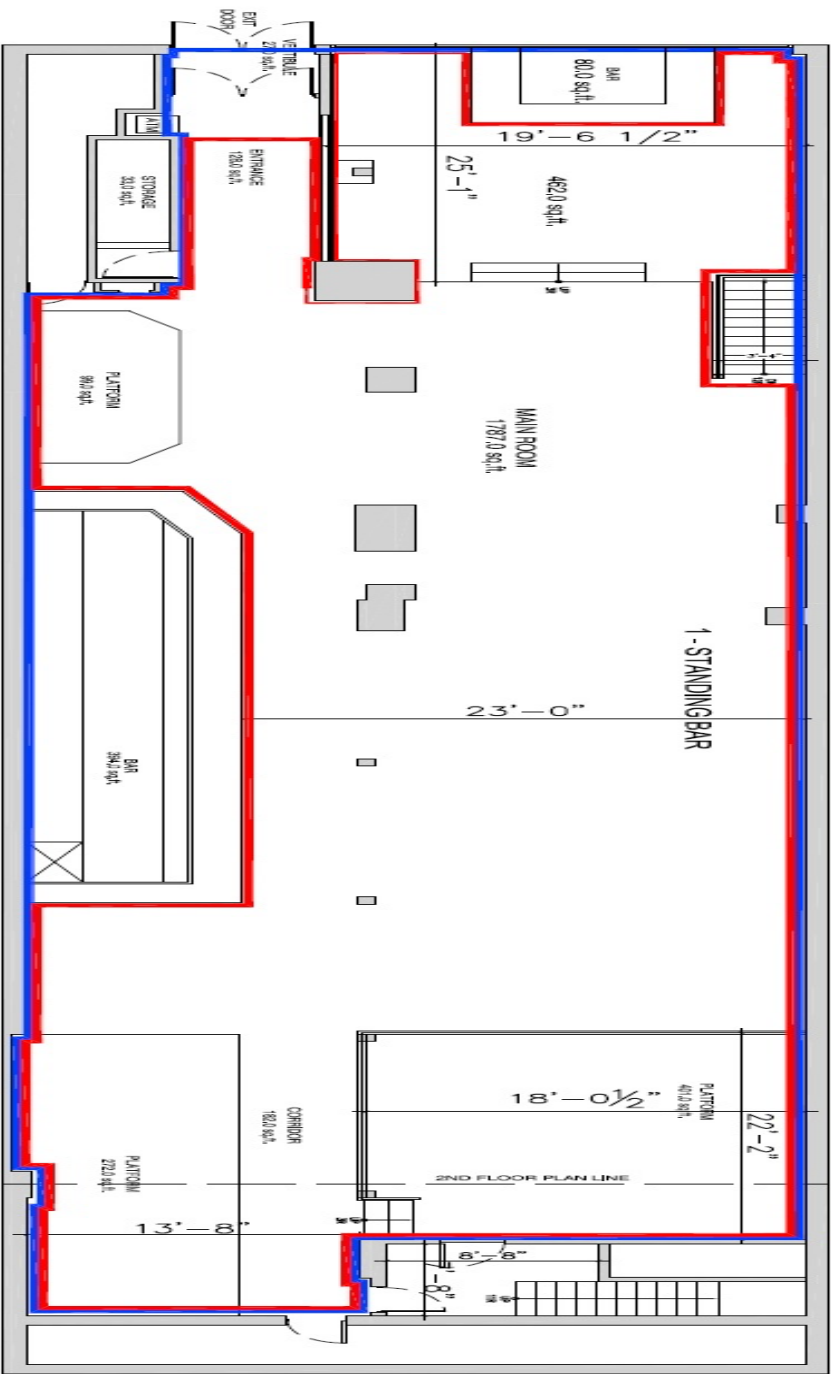
35 x Various XLR mic cat

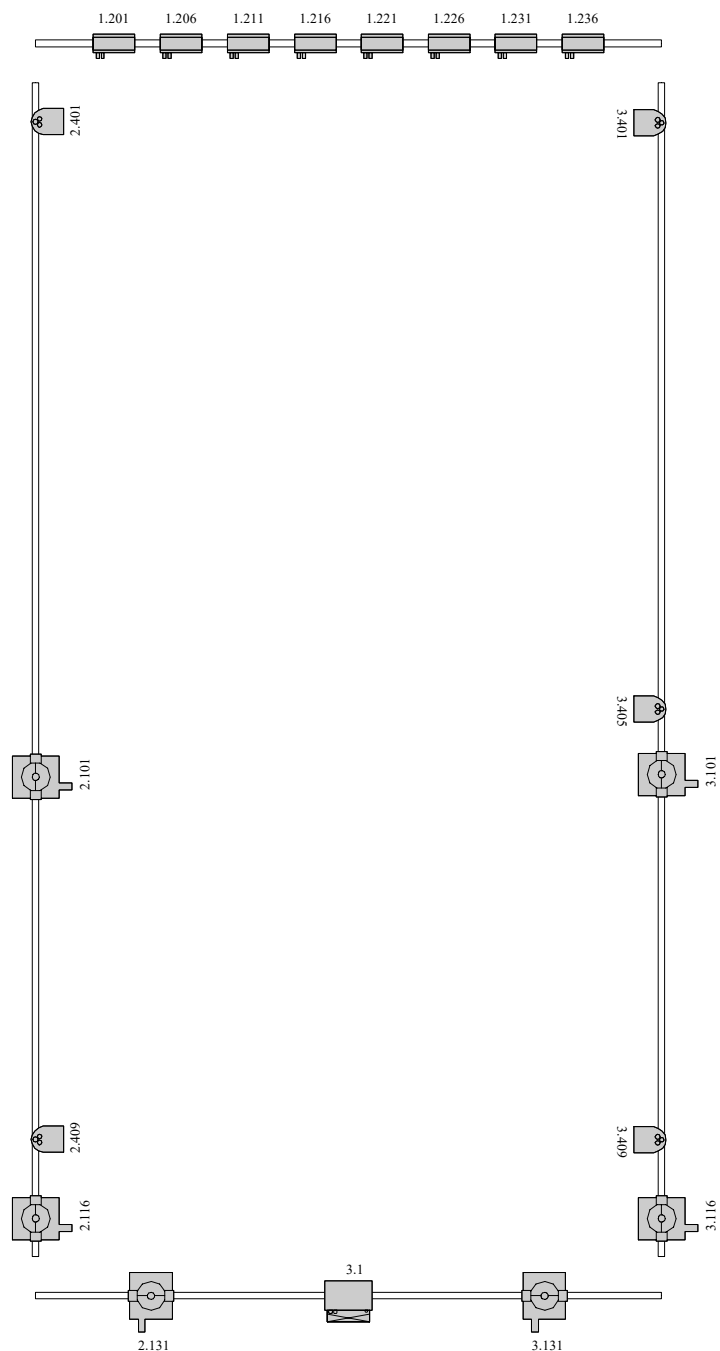
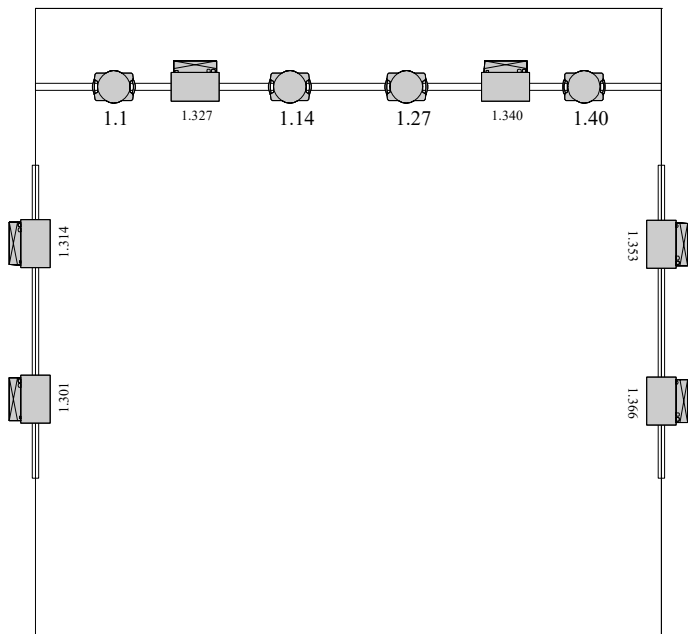
***** No Side Fills In Hous**

Power:

60 amp service, 3 phase
Cam Lock Available
Voltage = 120/208
Cycles = 60

Floor Plan





Legend

Symbol	Name	Count
	Palco 3 Mobile	7
	Design Wash LED Pro	4
	Microh LEDP64II	5
	Mac 250 Entour	6
	LUMI AMBER WHITE	8

Patch

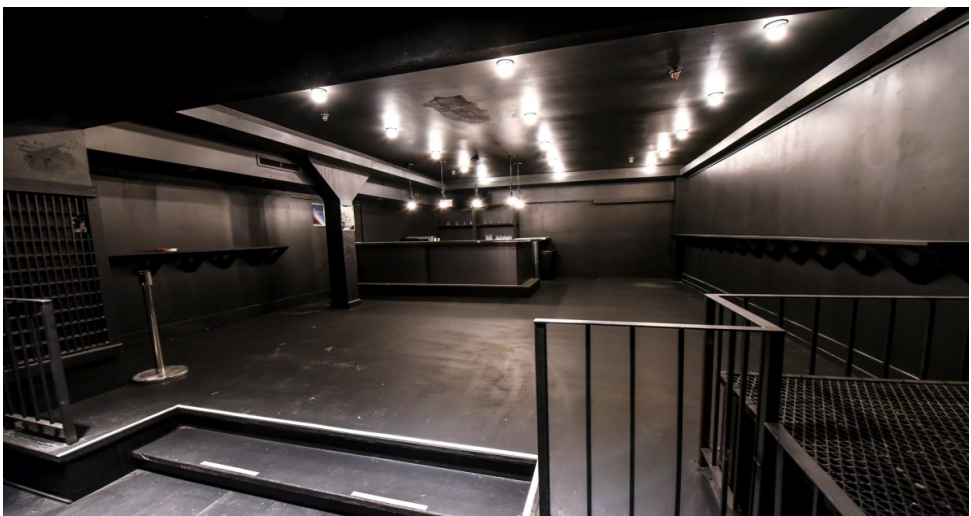
Venue: Velvet Underground
Mar/10/22

Spot	Patch	Model
1	1.201	X focus
2	1.206	X focus
3	1.211	X focus
4	1.216	X focus
5	1.221	X focus
6	1.226	X focus
7	1.231	X focus
8	1.236	X focus
102	2.101	Mac 250 Entour
103	2.116	Mac 250 Entour
104	2.131	Mac 250 Entour
106	3.101	Mac 250 Entour
107	3.116	Mac 250 Entour
108	3.131	Mac 250 Entour
201	1.301	Palco 3 Mobile
202	1.314	Palco 3 Mobile
203	1.327	Palco 3 Mobile
204	1.340	Palco 3 Mobile
205	1.353	Palco 3 Mobile
206	1.366	Palco 3 Mobile
208	3.1	Palco 3 Mobile
301	2.401	Microh LEDP64II
303	2.409	Microh LEDP64II
304	3.401	Microh LEDP64II
305	3.405	Microh LEDP64II
306	3.409	Microh LEDP64II
401	1.1	Design Wash LED Pro
402	1.14	Design Wash LED Pro
403	1.27	Design Wash LED Pro
404	1.40	Design Wash LED Pro

— THE —
VELVET
UNDERGROUND

THEVELVET.CA #THEVELVET





Artist Green Room

