

Mailing Address:	508 Queen St. West Toronto, Ontario M5V 2B3
Main Number:	647-351-9001
General Manager:	Brandon Kane: brandon@thevelvet.ca
Website:	www.thevelvet.ca
Internet:	Wireless throughout
Capacity:	Current: 355 standing
F/B:	Fully licensed throughout
Ticketing:	Sold through the venue's contract with Ticketweb.
Box Office:	Inside main doors
Accessibility:	There are no steps at entrance. Accessible seating is available ***washrooms are downstairs - not accessible
Rental Rates/Info:	Please send event dates, questions, comments to: info@thevelvet.ca
Terms :	All ages show will require a barricade set up unless otherwise arranged Intermission: Mandatory or penalty Merchandise rate: 20% house 80% artist on soft goods 50% deposit on signing venue license agreement Damage deposit required \$5,000,000 of public liability insurance Advertising available through venue social media, marquee, e-newsletter, and in-venue signage
2nd Floor:	
Artist Greenroom: 17' 4" x 17' x 10"	1 private shower, 1 private washroom, washer/dryer, kitchenette Work Station, lounge area with couches Iron & ironing board
Tour Manager Office: 5' 7" x 13' 5"	Work station, 2 chairs, full length mirror Rooftop patio

Load In Area:

Straight 5 Ton Trucks can use Laneway off Ryerson Ave.
for quick drop off/pick up
Bus with Trailers load in/out on Ryerson Ave.
*No parking south side of Queen St. 7am-10am, 3pm to 7pm
*No parking north side of Queen St. 7am-10am, 3pm to 7pm
*All load in and out is under strict supervision of The Velvet
Music Hall and begins at 1pm on Rental day unless otherwise
arranged.
*There is no on-site parking; Street parking and private lot
parking are responsibility of Promoter

Stage Specs

Wood Vaneer Stage
Depth = 18'
Width = 18.5'
Ceiling Height = 8.5' from Stage Stage
Height = 21" from Floor

Audio Specs

Main PA System:

1 x SC48 AVID Console
4 x L'Accoustics Arcs Speakers Flown
4 x PRG SB218 Subwoofers
4 x Lab Gruppen FP6400
1 x XTA DP226 Processor (L/R Configuration)
3 x Electro-Voice ZLX 15p fill/delay speakers
1 x 48 ch 1-way split snake with 8 returns to stage

Monitors:

5 x JSI J-17 Wedges (4 + 1 spare)
2 x Adamson PS215 Subs
4 x QSC PL218
2 x EV DX38 Processor (wedges)
1 x XTA DP226 Processor (subs)
4 x monitor mixes folded back from FOH
All mixes are Bi Amped, processing and amplification for stage monitoring is at FOH

**NO Side Fills in house

Microphones:

1 x Shure Beta 91
1 x Shure Beta 52
4 x Sennhieser e904
1 x Shure SM 849
1 x Shure SM 94
3 x Shure SM 81
6 x Shure SM 57
6 x Shure SM 58
4 x Rapco TD 100
8 x Rapco DB 100
2 x Stereo Direct Box

Stands & Cables:

12 x K&M tall boom stands
9 x K&M short boom stands
2 x Atlas Round Base stands
35 x Various XLR mic cables
2 x Radial Stage Flea 6 ch. sub snakes
1 x Rapco 12 ch. sub snake
1 x Switchcraft 10 ch. sub snake

DJ Gear: (Additional Rental Fee Applies)

2 x Pioneer CDJ Nexus 2000
1 x Pioneer DJM Nexus 900
1 x X-Frame DJ Table (4' x 8')

Power**FOH:**

60-amp service, 3 phase

Stage:

4 x 20amp circuits 120v
1 x 15amp circuit 120v

Cam Lock: (Distro Required for Use)

100 amp, 3 phase

NOTES:

Rental Fee Includes (1) Audio Technician
Lighting Technician Hire Requires Additional Fee

DB Limit:

99A / 110C Leq10 @ FOH as measured by Smaart SPL

NO In-House Cat5 or Cat6 lines

NO In-House Sidefills

NO In-House Monitor Console (Monitors are fed from FOH Console)

NO In-House Risers

NO In-House Projector or Video Wall

Lighting Specs: (Additional Fee Required for Lighting Technician)**Lighting Console:**

GrandMA 1 Ultra-Light

Lighting Fixtures: (Patch sheet on page 4)

Stage:

2 x Design Wash LED Pro

6 x Palco Mobile 3

8 x Lumi Amber / White

Floor:

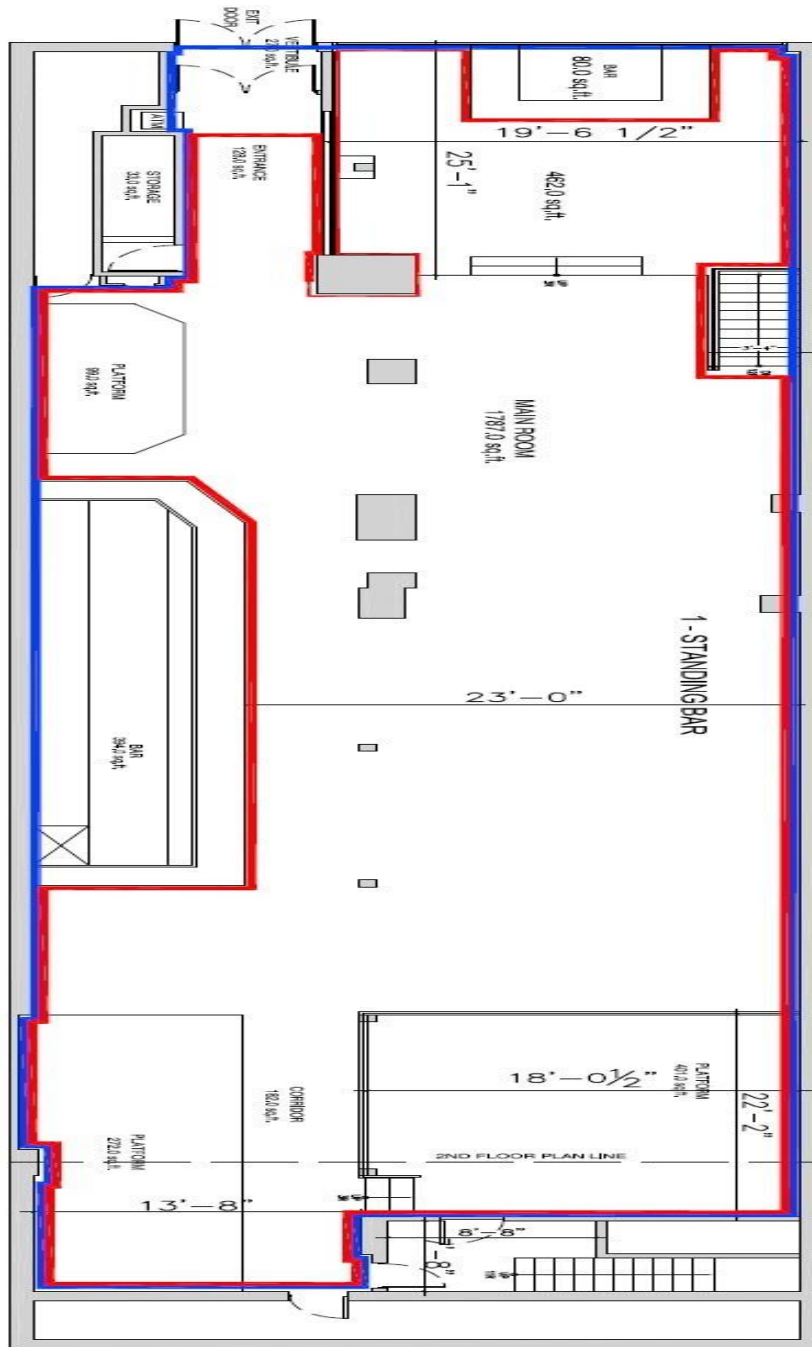
5 x Chauvet LED Par64 II

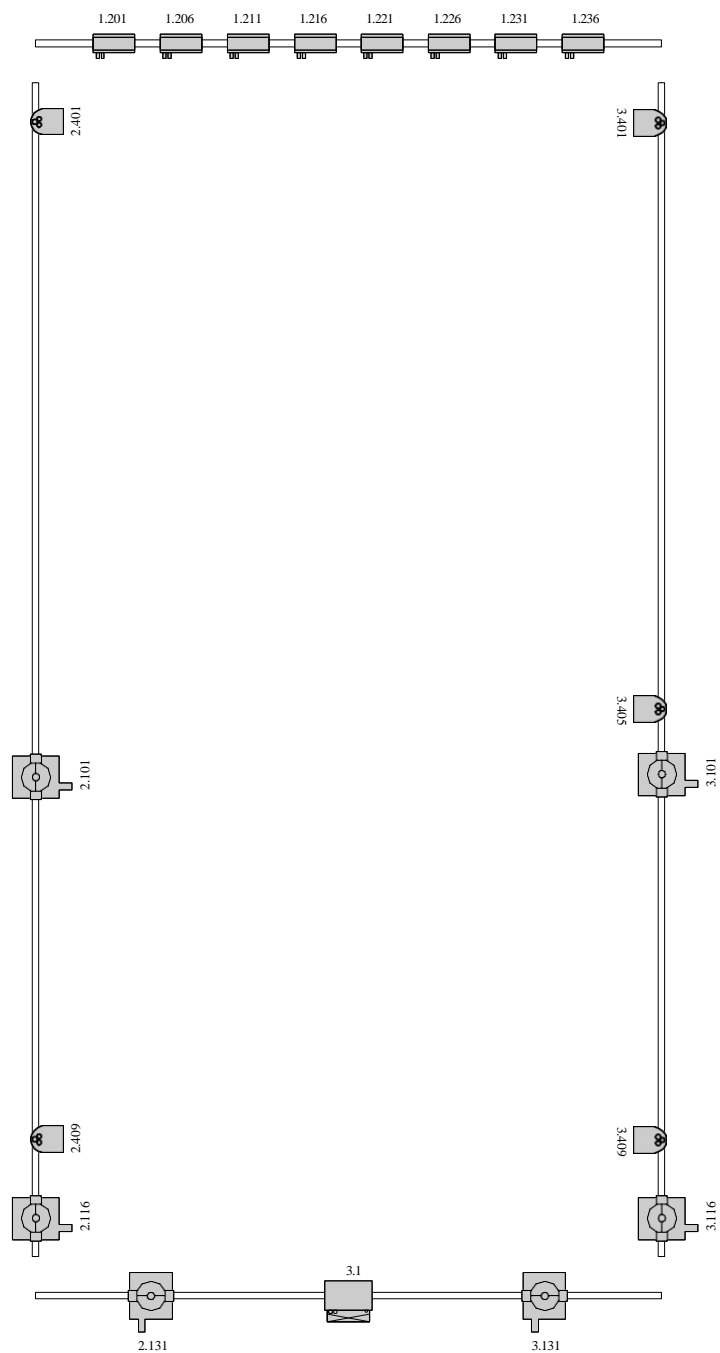
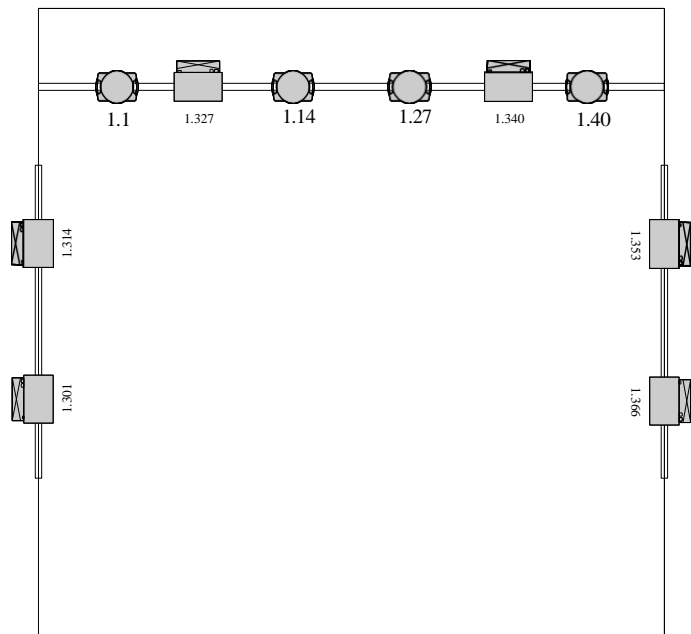
6 x Mac 250 Entour

1 x Radiance Hazer

Video: None

Floor Plan





Legend

Symbol	Name	Count
	Palco 3 Mobile	7
	Design Wash LED Pro	4
	Microh LEDP64II	5
	Mac 250 Entour	6
	LUMI AMBER WHITE	8

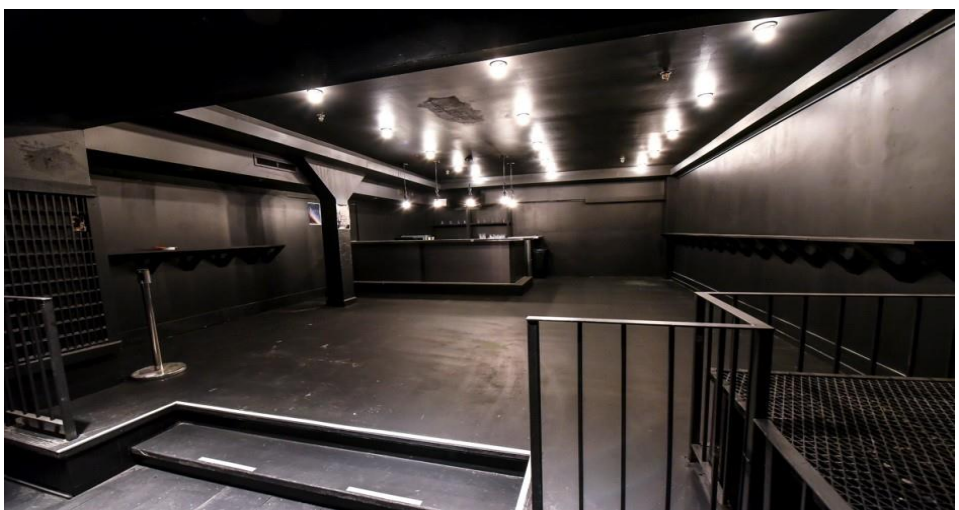
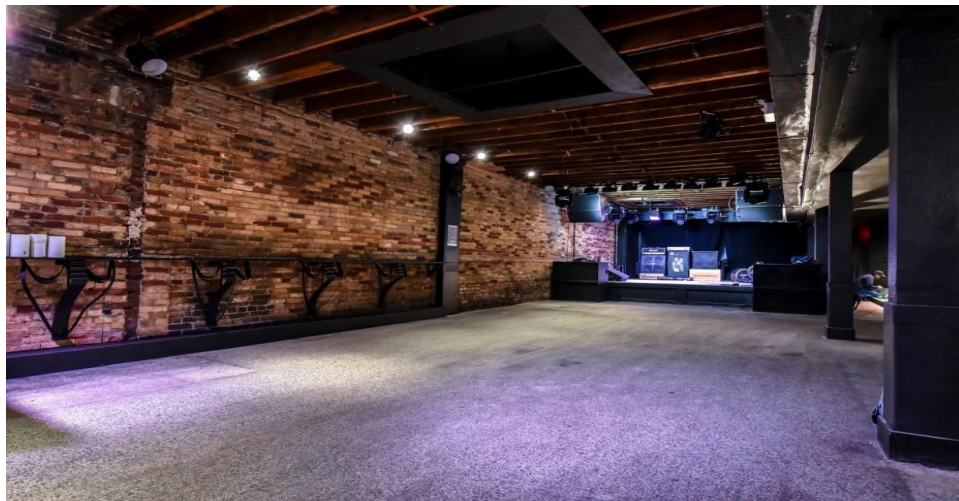
Patch

Venue: Velvet Underground
Mar/10/22

Spot	Patch	Model
1	1.201	X focus
2	1.206	X focus
3	1.211	X focus
4	1.216	X focus
5	1.221	X focus
6	1.226	X focus
7	1.231	X focus
8	1.236	X focus
102	2.101	Mac 250 Entour
103	2.116	Mac 250 Entour
104	2.131	Mac 250 Entour
106	3.101	Mac 250 Entour
107	3.116	Mac 250 Entour
108	3.131	Mac 250 Entour
201	1.301	Palco 3 Mobile
202	1.314	Palco 3 Mobile
203	1.327	Palco 3 Mobile
204	1.340	Palco 3 Mobile
205	1.353	Palco 3 Mobile
206	1.366	Palco 3 Mobile
208	3.1	Palco 3 Mobile
301	2.401	Microh LEDP64II
303	2.409	Microh LEDP64II
304	3.401	Microh LEDP64II
305	3.405	Microh LEDP64II
306	3.409	Microh LEDP64II
401	1.1	Design Wash LED Pro
402	1.14	Design Wash LED Pro
403	1.27	Design Wash LED Pro
404	1.40	Design Wash LED Pro

— THE —
VELVET
UNDERGROUND





Artist Green Room

